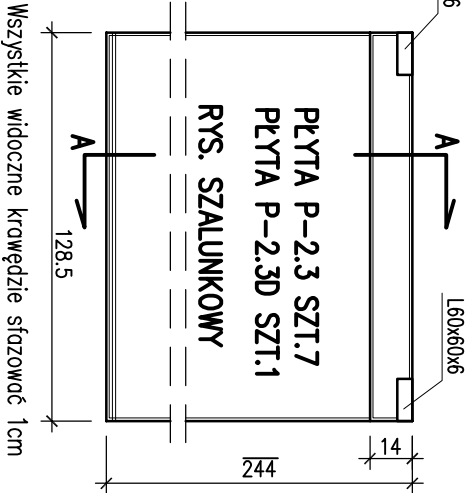
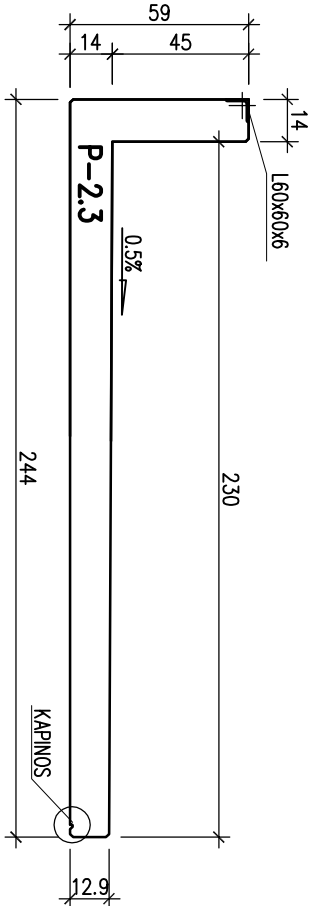
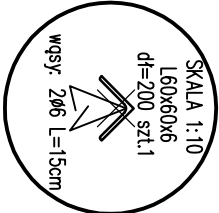
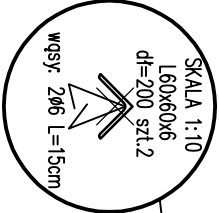
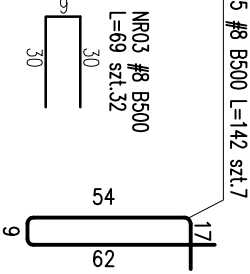
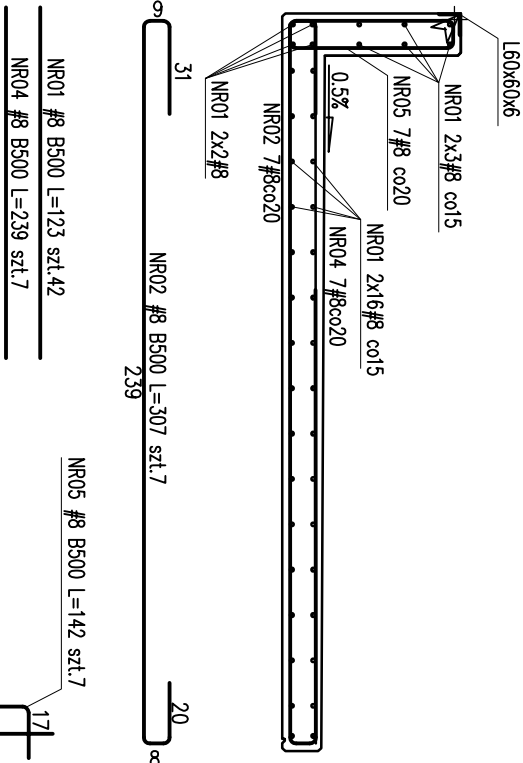


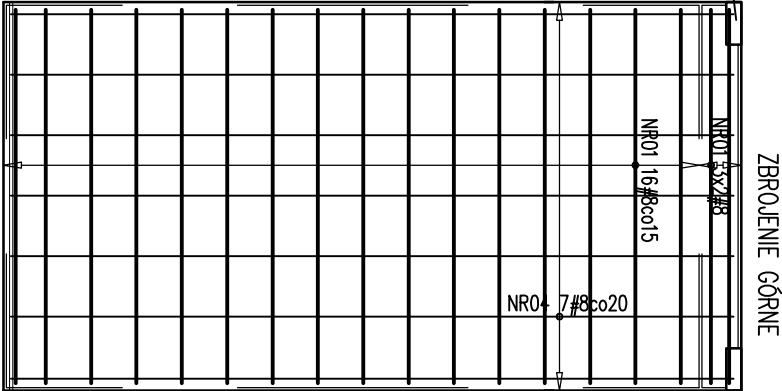
Przekrój A-A



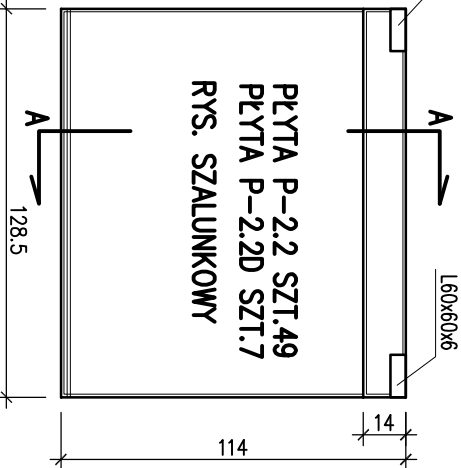
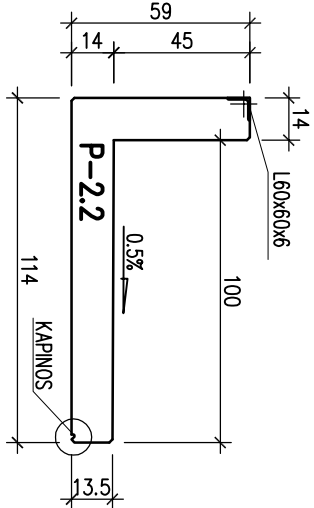
Wszystkie widoczne krawędzie szalować 1cm



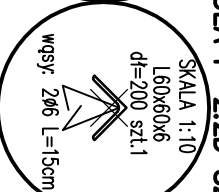
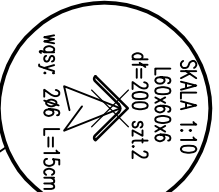
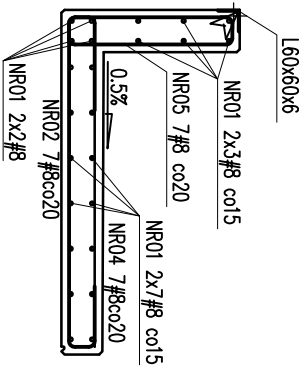
DLA P-2.3D SZT.1



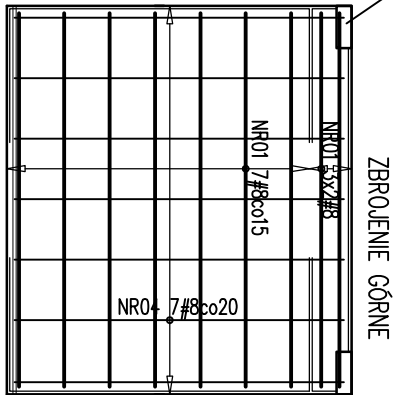
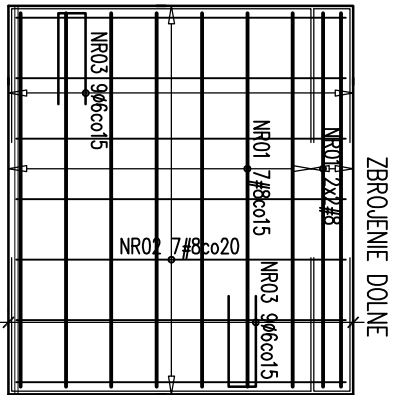
Przekrój A-A



Wszystkie widoczne krawędzie szalować 1cm



DLA P-2.2D SZT.7



UWAGI:

- Uchwylły montażowe ze stali nierdzewnej wg producenta prefabrykatów
- System kotwowy tulejowy z zatyczką ze stali nierdzewnej