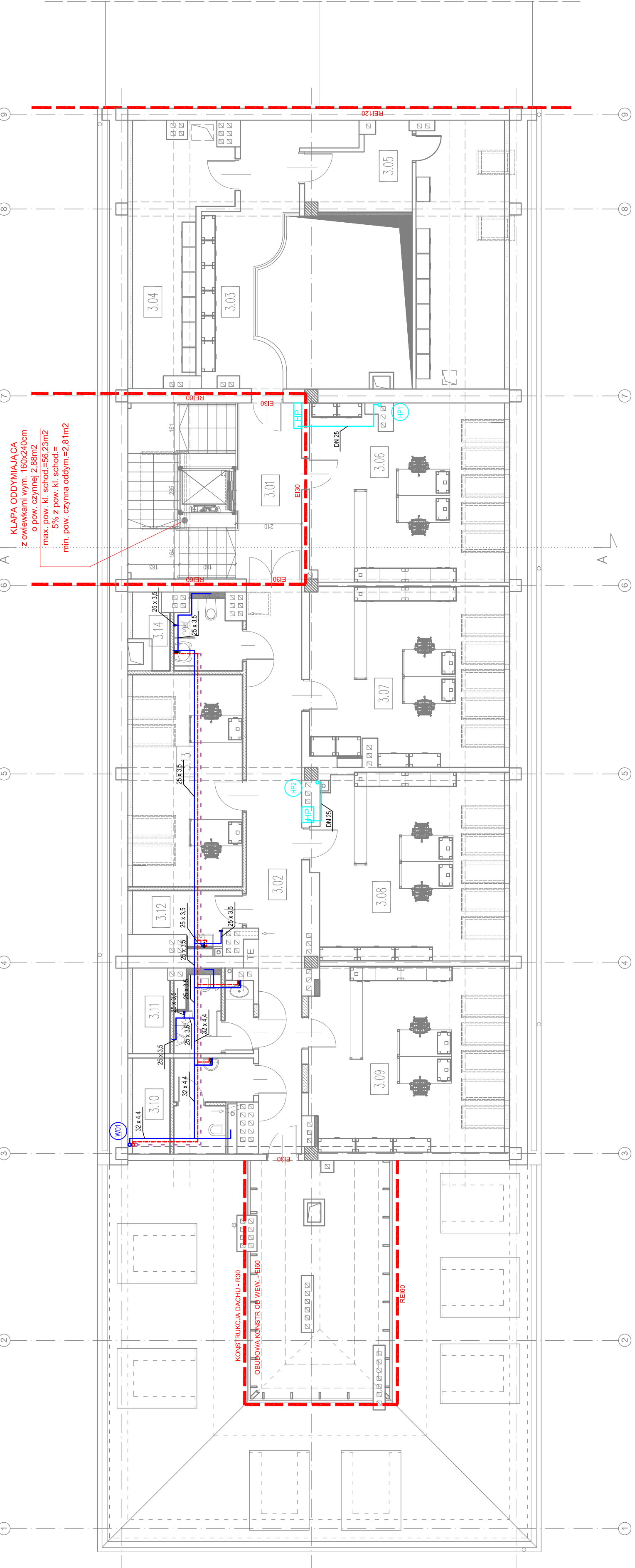


SPIS POMIESZCZEŃ:

3 PIĘTRO			
3.01	klatka schodowa	gres	30,98m ²
3.02	komunikacja	gres	29,23m ²
3.03	antresola	gres	19,79m ²
3.04	pom. magazynowe	gres	13,86m ²
3.05	pom. magazynowe	gres	26,70m ²
3.06	pom. biurowe	plytki dywanowe	24,65m ²
3.07	pom. biurowe	plytki dywanowe	24,44m ²
3.08	pom. biurowe	plytki dywanowe	24,90m ²
3.09	pom. biurowe	plytki dywanowe	25,81m ²
3.10	wc damskie	gres	6,31m ²
3.11	wc męskie	gres	5,68m ²
3.12	pom. porządkowe	gres	4,56m ²
3.13	pom. biurowe	plytki dywanowe	13,69m ²
3.14	wc nisp	gres	4,44m ²
R. A. Z. E. M.			10. os.
			m ²



KLAPA ODDYMIAJĄCA
z owiewkami wym. 160x240cm
o pow. czynnej 2,89m²
max. pow. kl. schod.=66,23m²
5% z pow. kl. schod.=
min. pow. czynna oddym.=2,81m²

Dach budynku SOK



PROJEKT:
plan3D ADRIAN BOGUTZAK
90-562 440 440
www.plan3d.com.pl biuro@plan3d.com.pl

TEMA:
OPRACOWANIE DOKUMENTACJI TECHNICZNEJ PRZEBUDOWY BRZOZO "HOTELU SWALCZYŃSKA" NA CELE ADMINISTRACJA PUBLICZNEJ SAMORZĄDOWEJ PRZELĄCZENIA PRZELĄCZENIA BUDYNKU SOK. I PROJEKT BUDYNKU TOALET PUBLICZNYCH.

TOM:
TOM I
PRZEBUDOWA BRZOZO "HOTELU SWALCZYŃSKA" NA CELE ADMINISTRACJA PUBLICZNEJ SAMORZĄDOWEJ

INWESTOR:
MIASTO SUWAKI
UL. MIKROEWEJKA 1, 16-400 SUWAKI

ADRES:
16-400 SUWAKI, UL. TANIECIEWICZA 71
działki o nr ew. 11030/3, 11032/3, 11032/4, 11033/1, 11033/2, 11033/3, 11033/4, 11033/5, 11033/6, 11033/7, 11033/8, 11033/9, 11033/10, 11033/11, 11033/12, 11033/13, 11033/14, 11033/15, 11033/16, 11033/17, 11033/18, 11033/19, 11033/20, 11033/21, 11033/22, 11033/23, 11033/24, 11033/25, 11033/26, 11033/27, 11033/28, 11033/29, 11033/30, 11033/31, 11033/32, 11033/33, 11033/34, 11033/35, 11033/36, 11033/37, 11033/38, 11033/39, 11033/40, 11033/41, 11033/42, 11033/43, 11033/44, 11033/45, 11033/46, 11033/47, 11033/48, 11033/49, 11033/50, 11033/51, 11033/52, 11033/53, 11033/54, 11033/55, 11033/56, 11033/57, 11033/58, 11033/59, 11033/60, 11033/61, 11033/62, 11033/63, 11033/64, 11033/65, 11033/66, 11033/67, 11033/68, 11033/69, 11033/70, 11033/71, 11033/72, 11033/73, 11033/74, 11033/75, 11033/76, 11033/77, 11033/78, 11033/79, 11033/80, 11033/81, 11033/82, 11033/83, 11033/84, 11033/85, 11033/86, 11033/87, 11033/88, 11033/89, 11033/90, 11033/91, 11033/92, 11033/93, 11033/94, 11033/95, 11033/96, 11033/97, 11033/98, 11033/99, 11033/100, 11033/101, 11033/102, 11033/103, 11033/104, 11033/105, 11033/106, 11033/107, 11033/108, 11033/109, 11033/110, 11033/111, 11033/112, 11033/113, 11033/114, 11033/115, 11033/116, 11033/117, 11033/118, 11033/119, 11033/120, 11033/121, 11033/122, 11033/123, 11033/124, 11033/125, 11033/126, 11033/127, 11033/128, 11033/129, 11033/130, 11033/131, 11033/132, 11033/133, 11033/134, 11033/135, 11033/136, 11033/137, 11033/138, 11033/139, 11033/140, 11033/141, 11033/142, 11033/143, 11033/144, 11033/145, 11033/146, 11033/147, 11033/148, 11033/149, 11033/150, 11033/151, 11033/152, 11033/153, 11033/154, 11033/155, 11033/156, 11033/157, 11033/158, 11033/159, 11033/160, 11033/161, 11033/162, 11033/163, 11033/164, 11033/165, 11033/166, 11033/167, 11033/168, 11033/169, 11033/170, 11033/171, 11033/172, 11033/173, 11033/174, 11033/175, 11033/176, 11033/177, 11033/178, 11033/179, 11033/180, 11033/181, 11033/182, 11033/183, 11033/184, 11033/185, 11033/186, 11033/187, 11033/188, 11033/189, 11033/190, 11033/191, 11033/192, 11033/193, 11033/194, 11033/195, 11033/196, 11033/197, 11033/198, 11033/199, 11033/200, 11033/201, 11033/202, 11033/203, 11033/204, 11033/205, 11033/206, 11033/207, 11033/208, 11033/209, 11033/210, 11033/211, 11033/212, 11033/213, 11033/214, 11033/215, 11033/216, 11033/217, 11033/218, 11033/219, 11033/220, 11033/221, 11033/222, 11033/223, 11033/224, 11033/225, 11033/226, 11033/227, 11033/228, 11033/229, 11033/230, 11033/231, 11033/232, 11033/233, 11033/234, 11033/235, 11033/236, 11033/237, 11033/238, 11033/239, 11033/240, 11033/241, 11033/242, 11033/243, 11033/244, 11033/245, 11033/246, 11033/247, 11033/248, 11033/249, 11033/250, 11033/251, 11033/252, 11033/253, 11033/254, 11033/255, 11033/256, 11033/257, 11033/258, 11033/259, 11033/260, 11033/261, 11033/262, 11033/263, 11033/264, 11033/265, 11033/266, 11033/267, 11033/268, 11033/269, 11033/270, 11033/271, 11033/272, 11033/273, 11033/274, 11033/275, 11033/276, 11033/277, 11033/278, 11033/279, 11033/280, 11033/281, 11033/282, 11033/283, 11033/284, 11033/285, 11033/286, 11033/287, 11033/288, 11033/289, 11033/290, 11033/291, 11033/292, 11033/293, 11033/294, 11033/295, 11033/296, 11033/297, 11033/298, 11033/299, 11033/300, 11033/301, 11033/302, 11033/303, 11033/304, 11033/305, 11033/306, 11033/307, 11033/308, 11033/309, 11033/310, 11033/311, 11033/312, 11033/313, 11033/314, 11033/315, 11033/316, 11033/317, 11033/318, 11033/319, 11033/320, 11033/321, 11033/322, 11033/323, 11033/324, 11033/325, 11033/326, 11033/327, 11033/328, 11033/329, 11033/330, 11033/331, 11033/332, 11033/333, 11033/334, 11033/335, 11033/336, 11033/337, 11033/338, 11033/339, 11033/340, 11033/341, 11033/342, 11033/343, 11033/344, 11033/345, 11033/346, 11033/347, 11033/348, 11033/349, 11033/350, 11033/351, 11033/352, 11033/353, 11033/354, 11033/355, 11033/356, 11033/357, 11033/358, 11033/359, 11033/360, 11033/361, 11033/362, 11033/363, 11033/364, 11033/365, 11033/366, 11033/367, 11033/368, 11033/369, 11033/370, 11033/371, 11033/372, 11033/373, 11033/374, 11033/375, 11033/376, 11033/377, 11033/378, 11033/379, 11033/380, 11033/381, 11033/382, 11033/383, 11033/384, 11033/385, 11033/386, 11033/387, 11033/388, 11033/389, 11033/390, 11033/391, 11033/392, 11033/393, 11033/394, 11033/395, 11033/396, 11033/397, 11033/398, 11033/399, 11033/400, 11033/401, 11033/402, 11033/403, 11033/404, 11033/405, 11033/406, 11033/407, 11033/408, 11033/409, 11033/410, 11033/411, 11033/412, 11033/413, 11033/414, 11033/415, 11033/416, 11033/417, 11033/418, 11033/419, 11033/420, 11033/421, 11033/422, 11033/423, 11033/424, 11033/425, 11033/426, 11033/427, 11033/428, 11033/429, 11033/430, 11033/431, 11033/432, 11033/433, 11033/434, 11033/435, 11033/436, 11033/437, 11033/438, 11033/439, 11033/440, 11033/441, 11033/442, 11033/443, 11033/444, 11033/445, 11033/446, 11033/447, 11033/448, 11033/449, 11033/450, 11033/451, 11033/452, 11033/453, 11033/454, 11033/455, 11033/456, 11033/457, 11033/458, 11033/459, 11033/460, 11033/461, 11033/462, 11033/463, 11033/464, 11033/465, 11033/466, 11033/467, 11033/468, 11033/469, 11033/470, 11033/471, 11033/472, 11033/473, 11033/474, 11033/475, 11033/476, 11033/477, 11033/478, 11033/479, 11033/480, 11033/481, 11033/482, 11033/483, 11033/484, 11033/485, 11033/486, 11033/487, 11033/488, 11033/489, 11033/490, 11033/491, 11033/492, 11033/493, 11033/494, 11033/495, 11033/496, 11033/497, 11033/498, 11033/499, 11033/500, 11033/501, 11033/502, 11033/503, 11033/504, 11033/505, 11033/506, 11033/507, 11033/508, 11033/509, 11033/510, 11033/511, 11033/512, 11033/513, 11033/514, 11033/515, 11033/516, 11033/517, 11033/518, 11033/519, 11033/520, 11033/521, 11033/522, 11033/523, 11033/524, 11033/525, 11033/526, 11033/527, 11033/528, 11033/529, 11033/530, 11033/531, 11033/532, 11033/533, 11033/534, 11033/535, 11033/536, 11033/537, 11033/538, 11033/539, 11033/540, 11033/541, 11033/542, 11033/543, 11033/544, 11033/545, 11033/546, 11033/547, 11033/548, 11033/549, 11033/550, 11033/551, 11033/552, 11033/553, 11033/554, 11033/555, 11033/556, 11033/557, 11033/558, 11033/559, 11033/560, 11033/561, 11033/562, 11033/563, 11033/564, 11033/565, 11033/566, 11033/567, 11033/568, 11033/569, 11033/570, 11033/571, 11033/572, 11033/573, 11033/574, 11033/575, 11033/576, 11033/577, 11033/578, 11033/579, 11033/580, 11033/581, 11033/582, 11033/583, 11033/584, 11033/585, 11033/586, 11033/587, 11033/588, 11033/589, 11033/590, 11033/591, 11033/592, 11033/593, 11033/594, 11033/595, 11033/596, 11033/597, 11033/598, 11033/599, 11033/600, 11033/601, 11033/602, 11033/603, 11033/604, 11033/605, 11033/606, 11033/607, 11033/608, 11033/609, 11033/610, 11033/611, 11033/612, 11033/613, 11033/614, 11033/615, 11033/616, 11033/617, 11033/618, 11033/619, 11033/620, 11033/621, 11033/622, 11033/623, 11033/624, 11033/625, 11033/626, 11033/627, 11033/628, 11033/629, 11033/630, 11033/631, 11033/632, 11033/633, 11033/634, 11033/635, 11033/636, 11033/637, 11033/638, 11033/639, 11033/640, 11033/641, 11033/642, 11033/643, 11033/644, 11033/645, 11033/646, 11033/647, 11033/648, 11033/649, 11033/650, 11033/651, 11033/652, 11033/653, 11033/654, 11033/655, 11033/656, 11033/657, 11033/658, 11033/659, 11033/660, 11033/661, 11033/662, 11033/663, 11033/664, 11033/665, 11033/666, 11033/667, 11033/668, 11033/669, 11033/670, 11033/671, 11033/672, 11033/673, 11033/674, 11033/675, 11033/676, 11033/677, 11033/678, 11033/679, 11033/680, 11033/681, 11033/682, 11033/683, 11033/684, 11033/685, 11033/686, 11033/687, 11033/688, 11033/689, 11033/690, 11033/691, 11033/692, 11033/693, 11033/694, 11033/695, 11033/696, 11033/697, 11033/698, 11033/699, 11033/700, 11033/701, 11033/702, 11033/703, 11033/704, 11033/705, 11033/706, 11033/707, 11033/708, 11033/709, 11033/710, 11033/711, 11033/712, 11033/713, 11033/714, 11033/715, 11033/716, 11033/717, 11033/718, 11033/719, 11033/720, 11033/721, 11033/722, 11033/723, 11033/724, 11033/725, 11033/726, 11033/727, 11033/728, 11033/729, 11033/730, 11033/731, 11033/732, 11033/733, 11033/734, 11033/735, 11033/736, 11033/737, 11033/738, 11033/739, 11033/740, 11033/741, 11033/742, 11033/743, 11033/744, 11033/745, 11033/746, 11033/747, 11033/748, 11033/749, 11033/750, 11033/751, 11033/752, 11033/753, 11033/754, 11033/755, 11033/756, 11033/757, 11033/758, 11033/759, 11033/760, 11033/761, 11033/762, 11033/763, 11033/764, 11033/765, 11033/766, 11033/767, 11033/768, 11033/769, 11033/770, 11033/771, 11033/772, 11033/773, 11033/774, 11033/775, 11033/776, 11033/777, 11033/778, 11033/779, 11033/780, 11033/781, 11033/782, 11033/783, 11033/784, 11033/785, 11033/786, 11033/787, 11033/788, 11033/789, 11033/790, 11033/791, 11033/792, 11033/793, 11033/794, 11033/795, 11033/796, 11033/797, 11033/798, 11033/799, 11033/800, 11033/801, 11033/802, 11033/803, 11033/804, 11033/805, 11033/806, 11033/807, 11033/808, 11033/809, 11033/810, 11033/811, 11033/812, 11033/813, 11033/814, 11033/815, 11033/816, 11033/817, 11033/818, 11033/819, 11033/820, 11033/821, 11033/822, 11033/823, 11033/824, 11033/825, 11033/826, 11033/827, 11033/828, 11033/829, 11033/830, 11033/831, 11033/832, 11033/833, 11033/834, 11033/835, 11033/836, 11033/837, 11033/838, 11033/839, 11033/840, 11033/841, 11033/842, 11033/843, 11033/844, 11033/845, 11033/846, 11033/847, 11033/848, 11033/849, 11033/850, 11033/851, 11033/852, 11033/853, 11033/854, 11033/855, 11033/856, 11033/857, 11033/858, 11033/859, 11033/860, 11033/861, 11033/862, 11033/863, 11033/864, 11033/865, 11033/866, 11033/867, 11033/868, 11033/869, 11033/870, 11033/871, 11033/872, 11033/873, 11033/874, 11033/875, 11033/876, 11033/877, 11033/878, 11033/879, 11033/880, 11033/881, 11033/882, 11033/883, 11033/884, 11033/885, 11033/886, 11033/887, 11033/888, 11033/889, 11033/890, 11033/891, 11033/892, 11033/893, 11033/894, 11033/895, 11033/896, 11033/897, 11033/898, 11033/899, 11033/900, 11033/901, 11033/902, 11033/903, 11033/904, 11033/905, 11033/906, 11033/907, 11033/908, 11033/909, 11033/910, 11033/911, 11033/912, 11033/913, 11033/914, 11033/915, 11033/916, 11033/917, 11033/918, 11033/919, 11033/920, 11033/921, 11033/922, 11033/923, 11033/924, 11033/925, 11033/926, 11033/927, 11033/928, 11033/929, 11033/930, 11033/931, 11033/932, 11033/933, 11033/934, 11033/935, 11033/936, 11033/937, 11033/938, 11033/939, 11033/940, 11033/941, 11033/942, 11033/943, 11033/944, 11033/945, 11033/946, 11033/947, 11033/948, 11033/949, 11033/950, 11033/951, 11033/952, 11033/953, 11033/954, 11033/955, 11033/956, 11033/957, 11033/958, 11033/959, 11033/960, 11033/961, 11033/962, 11033/963, 11033/964, 11033/965, 11033/966, 11033/967, 11033/968, 11033/969, 11033/970, 11033/971, 11033/972, 11033/973, 11033/974, 11033/975, 11033/976, 11033/977, 11033/978, 11033/979, 11033/980, 11033/981, 11033/982, 11033/983, 11033/984, 11033/985, 11033/986, 11033/987, 11033/98