

Suwalki Euroboisko&Tennis

Suwalki,

Lighting System

Pole / Fixture Summary							
Pole ID	Pole Height	Mtg Height	Fixture Qty	Luminaire Type	Avg Load	Max Load	Circuit
S1-S2	24.4	24.4	12	Green Generation	18.77 kW	20.40 kW	A
S3	24.4	24.4	12	Green Generation	18.77 kW	20.40 kW	A
		24.4	12	Green Generation	18.77 kW	20.40 kW	B
S4	24.4	24.4	12	Green Generation	18.77 kW	20.40 kW	B
		24.4	12	Green Generation	18.77 kW	20.40 kW	A
S5-S6	24.4	24.4	12	Green Generation	18.77 kW	20.40 kW	B
6			96		150.14 kW	163.20 kW	

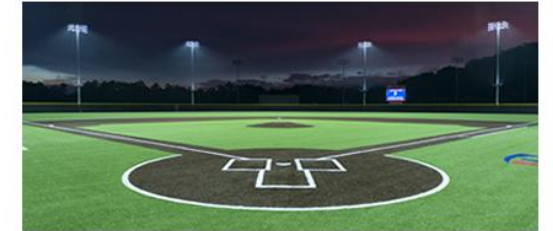
Circuit Summary				
Circuit	Description	Avg Load	Max Load	Fixture Qty
A	Football 1	75.07 kW	81.6 kW	48
B	Football 2	75.07 kW	81.6 kW	48

Fixture Type Summary						
Type	Source	Avg Wattage	Max Wattage	Constant Lumens	Application	Quantity
Green Generation	1500W MZ	1564W	1700W	134,000	100K	96

Light Level Summary

Calculation Grid Summary								
Grid Name	Calculation Metric	Illumination					Circuits	Fixture Qty
		Ave	Min	Max	Min/Max	Min/Ave		
Football 1	Horizontal Illuminance	515	394	620	0.63	0.77	A	48
Football 2	Horizontal Illuminance	518	393	619	0.63	0.76	B	48

From Hometown to Professional



We Make It Happen®

Not to be reproduced in whole or part without the written consent of Musco Sports Lighting, LLC. ©1981, 2019 Musco Sports Lighting, LLC.

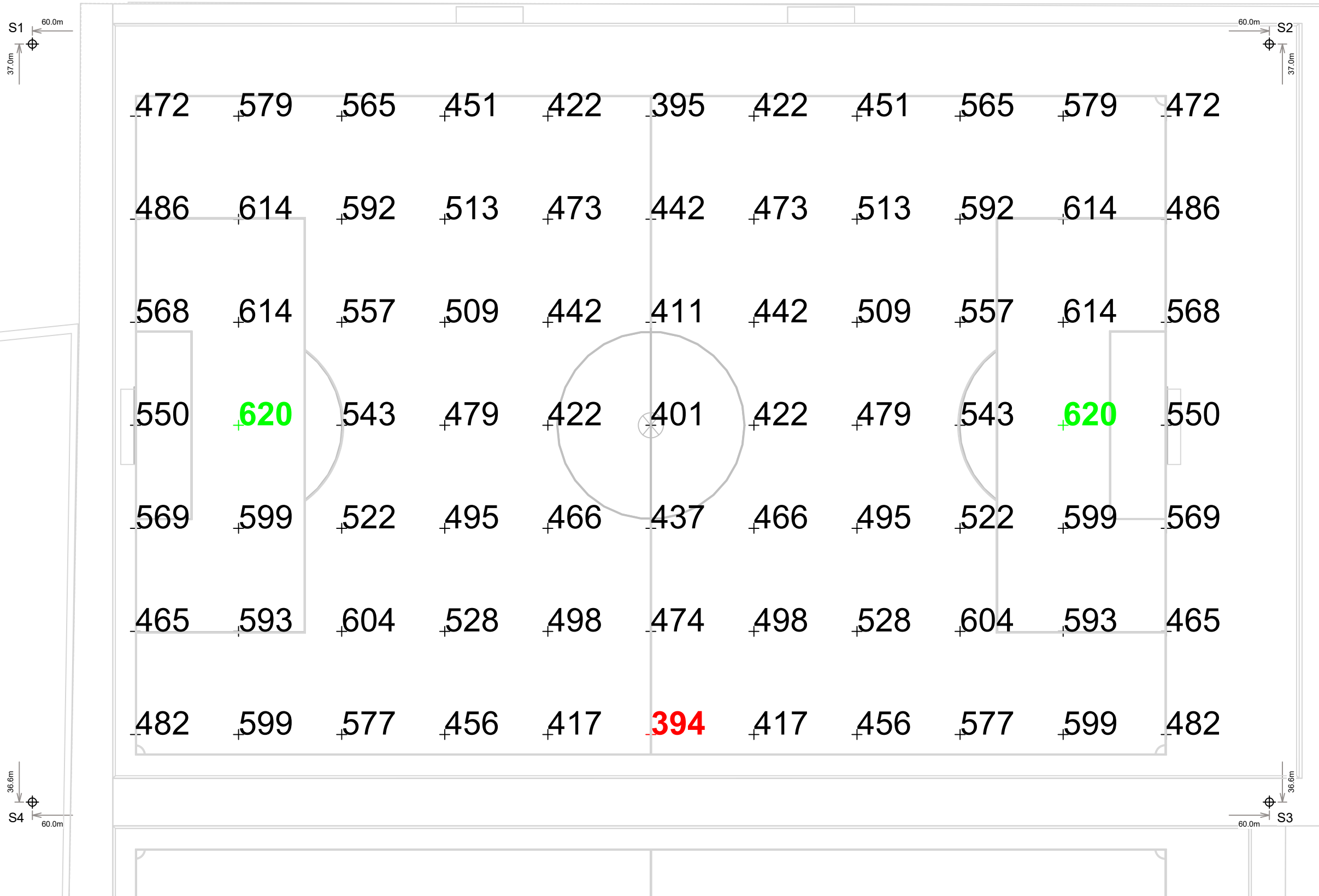
EQUIPMENT LIST FOR AREAS SHOWN

Pole			Luminaires					
QTY	LOCATION	SIZE	GRADE ELEVATION	MOUNTING HEIGHT	LUMINAIRE TYPE	QTY / POLE	THIS GRID	OTHER GRIDS
2	S1-S2	24.38m	-	24.38m	LSG 15MZ	12	12	0
2	S3-S4	24.38m	-	24.38m	LSG 15MZ	24	12	12
4	TOTALS					72	48	24

Suwalki Euroboisko&Tennis
Suwalki,

GRID SUMMARY	
Name:	Football 1
Size:	100.0m x 64.0m
Spacing:	10.0m x 10.0m
Height:	1.0m above grade

ILLUMINATION SUMMARY	
MAINTAINED HORIZONTAL LUX	
Entire Grid	
Guaranteed Average:	500
Scan Average:	514.75
Maximum:	620
Minimum:	394
Guaranteed Min / Avg:	0.7
Min / Avg:	0.76
Min / Max:	0.63
UG (adjacent pts):	1.27
CU:	0.65
No. of Points:	77
LUMINAIRE INFORMATION	
Color / CRI:	1500W MZ
Luminaire Output:	134,000 lumens
No. of Luminaires:	48
Avg Load:	75.07 kW
Max Load:	81.6 kW



Guaranteed Performance: The ILLUMINATION described above is guaranteed per your Musco Warranty document and includes a 0.95 dirt depreciation factor.

Field Measurements: Individual field measurements may vary from computer-calculated predictions and should be taken in accordance with IESNA RP-6-15.

Electrical System Requirements: Refer to Amperage Draw Chart and/or the "Musco Control System Summary" for electrical sizing.

Installation Requirements: Results assume ± 3% nominal voltage at line side of the driver and structures located within 3 feet (1m) of design locations.



Pole location(s) ⊕ dimensions are relative to 0,0 reference point(s) ⊗



We Make It Happen.

Not to be reproduced in whole or part without the written consent of Musco Sports Lighting, LLC. ©1981, 2019 Musco Sports Lighting, LLC.

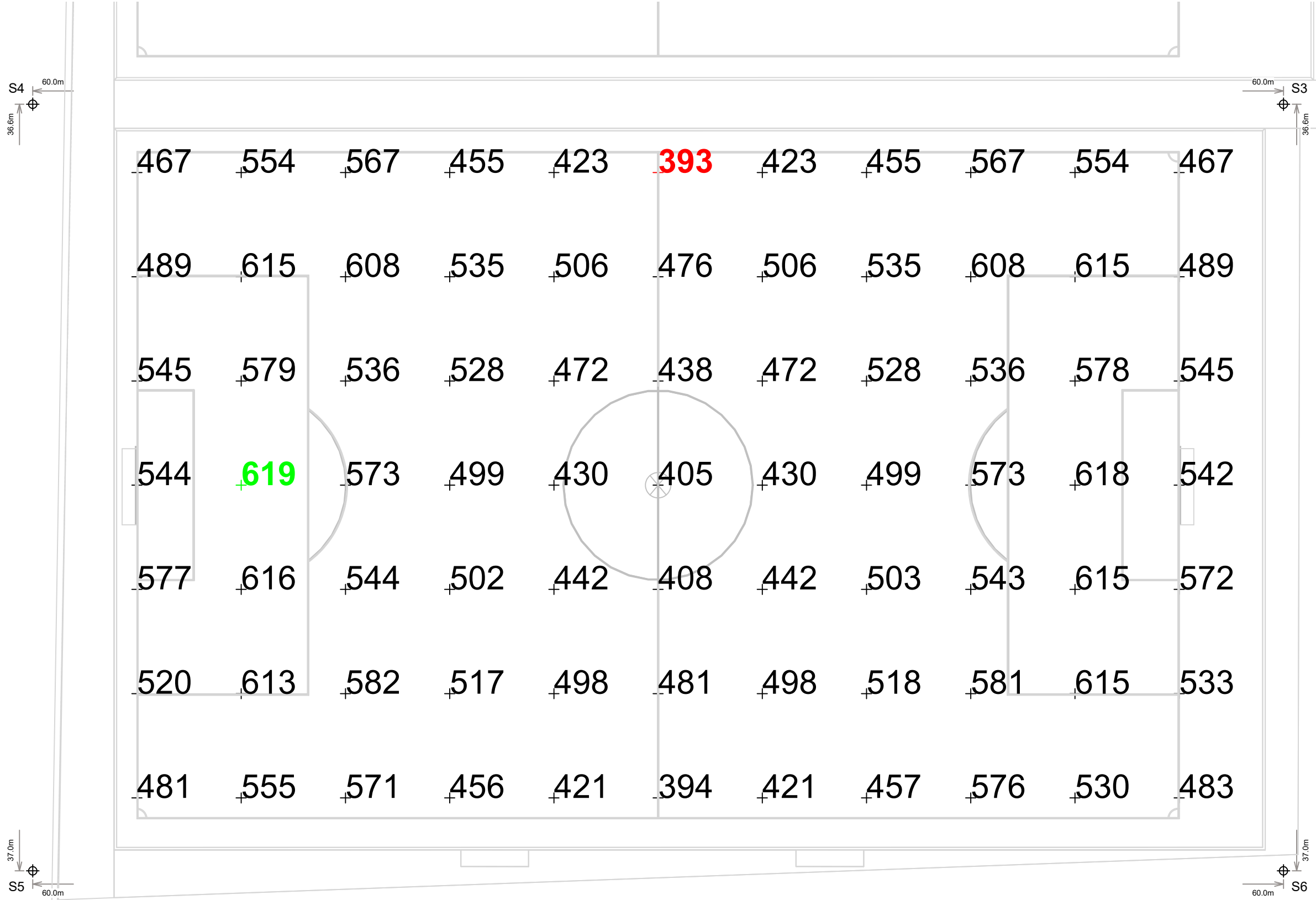
EQUIPMENT LIST FOR AREAS SHOWN

Pole			Luminaires						
QTY	LOCATION	SIZE	GRADE ELEVATION	MOUNTING HEIGHT	LUMINAIRE TYPE	QTY / POLE	THIS GRID	OTHER GRIDS	
2	S3-S4	24.38m	-	24.38m	LSG 15MZ	24	12	12	
2	S5-S6	24.38m	-	24.38m	LSG 15MZ	12	12	0	
4	TOTALS						72	48	24

Suwalki Euroboisko&Tennis
Suwalki,

GRID SUMMARY	
Name:	Football 2
Size:	100.0m x 64.0m
Spacing:	10.0m x 10.0m
Height:	1.0m above grade

ILLUMINATION SUMMARY	
MAINTAINED HORIZONTAL LUX	
Entire Grid	
Guaranteed Average:	500
Scan Average:	517.68
Maximum:	619
Minimum:	393
Guaranteed Min / Avg:	0.7
Min / Avg:	0.76
Min / Max:	0.63
UG (adjacent pts):	1.26
CU:	0.65
No. of Points:	77
LUMINAIRE INFORMATION	
Color / CRI:	1500W MZ
Luminaire Output:	134,000 lumens
No. of Luminaires:	48
Avg Load:	75.07 kW
Max Load:	81.6 kW



Guaranteed Performance: The ILLUMINATION described above is guaranteed per your Musco Warranty document and includes a 0.95 dirt depreciation factor.

Field Measurements: Individual field measurements may vary from computer-calculated predictions and should be taken in accordance with IESNA RP-6-15.

Electrical System Requirements: Refer to Amperage Draw Chart and/or the "Musco Control System Summary" for electrical sizing.

Installation Requirements: Results assume ± 3% nominal voltage at line side of the driver and structures located within 3 feet (1m) of design locations.



Not to be reproduced in whole or part without the written consent of Musco Sports Lighting, LLC. ©1981, 2019 Musco Sports Lighting, LLC.

ILLUMINATION SUMMARY

NOTES: POLE LOCATIONS TO BE CONFIRMED.
DISTNACE BETWEEN PITCHES NEED TO BE CONFIRMED.

Suwalki Euroboisko&Tennis

Suwalki,

EQUIPMENT LAYOUT

INCLUDES:
· Football 1
· Football 2

Electrical System Requirements: Refer to Amperage Draw Chart and/or the "Musco Control System Summary" for electrical sizing.

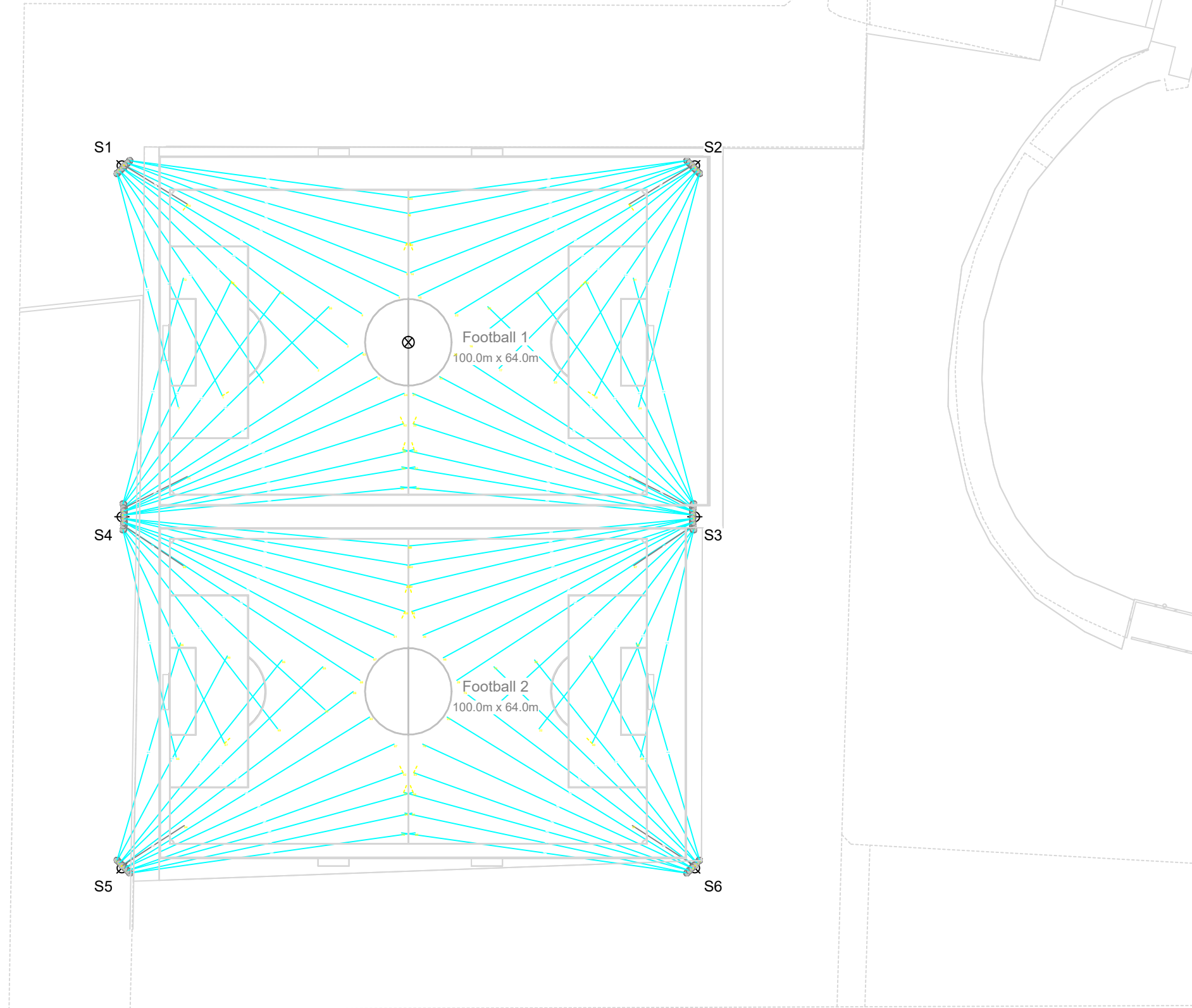
Installation Requirements: Results assume ± 3% nominal voltage at line side of the driver and structures located within 3 feet (1m) of design locations.

EQUIPMENT LIST FOR AREAS SHOWN

QTY	Pole		Luminaires			QTY / POLE
	LOCATION	SIZE	GRADE ELEVATION	MOUNTING HEIGHT	LUMINAIRE TYPE	
4	S1-S2 S5-S6	24.38m	-	24.38m	LSG 15MZ	12
2	S3-S4	24.38m	-	24.38m	LSG 15MZ	24
6	TOTALS					96

SINGLE LUMINAIRE AMPERAGE DRAW CHART

Ballast Specifications (.90 min power factor)	Line Amperage Per Luminaire (max draw)					
	220 (50)	230 (50)	240 (50)	380 (50)	400 (50)	415 (50)
Single Phase Voltage						
1500 watt MZ	8.3	7.7	7.5	4.7	4.4	4.2



Pole location(s) ⊕ dimensions are relative to 0,0 reference point(s) ⊗



We Make It Happen.

Not to be reproduced in whole or part without the written consent of Musco Sports Lighting, LLC. ©1981, 2019 Musco Sports Lighting, LLC.