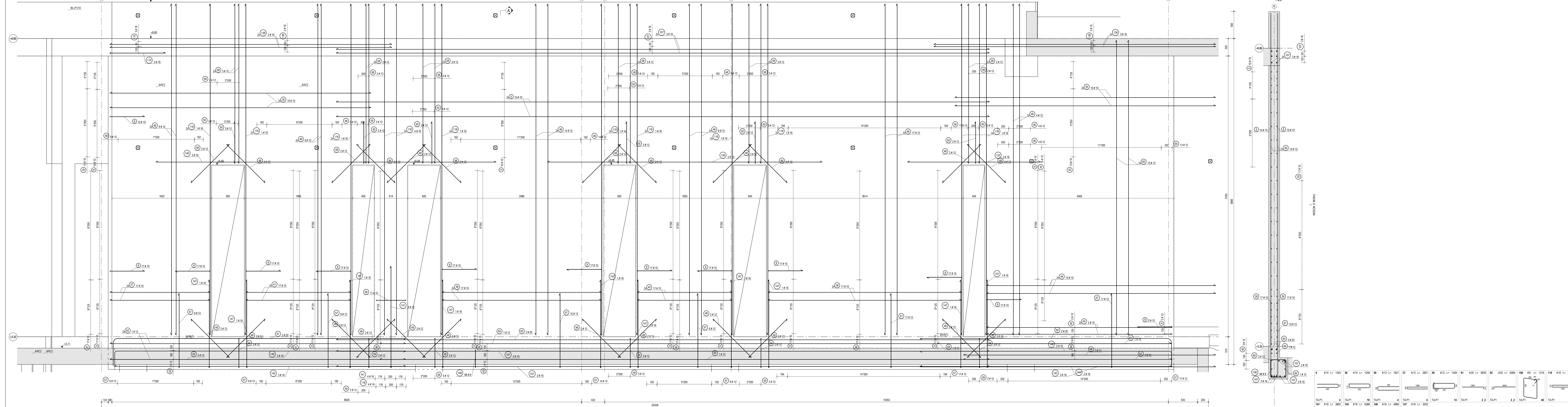


WIDOK Z BOKU

1:20

PRZEKRÓJ A - A

1:20



ZESTAWIENIE STALI ZBRZOJENEJ

ZESTAWIENIE STALI ZBRZOJENEJ											
POZYCJA TAP11 SZT 1 MATERIAŁ C627 MASA STALI kg 3448,3 / 348,32											
ZESTAWIENIE OBLICZENIA											
SRN	NR	WZRAJ	SKT	KLASA	D	L	MSD	A	B	C	D
1A11	1	20	SR00P	16	10000						
1A11	2	18	SR00P	16	1400						
1A11	3	40	SR00P	16	4794						
1A11	4	24	SR00P	16	3023						
1A11	5	24	SR00P	16	1940						
1A11	6	24	SR00P	16	1120						
1A11	7	24	SR00P	16	1192						
1A11	8	24	SR00P	16	1207						
1A11	9	24	SR00P	16	4228						
1A11	10	24	SR00P	16	1020						
1A11	11	24	SR00P	16	1020						
1A11	12	24	SR00P	16	1020						
1A11	13	24	SR00P	16	1020						
1A11	14	24	SR00P	16	1020						
1A11	15	24	SR00P	16	1020						
1A11	16	24	SR00P	16	1020						
1A11	17	24	SR00P	16	1020						
1A11	18	24	SR00P	16	1020						
1A11	19	24	SR00P	16	1020						
1A11	20	24	SR00P	16	1020						
1A11	21	24	SR00P	16	1020						
1A11	22	24	SR00P	16	1020						
1A11	23	24	SR00P	16	1020						
1A11	24	24	SR00P	16	1020						
1A11	25	24	SR00P	16	1020						
1A11	26	24	SR00P	16	1020						
1A11	27	24	SR00P	16	1020						
1A11	28	24	SR00P	16	1020						
1A11	29	24	SR00P	16	1020						
1A11	30	24	SR00P	16	1020						
1A11	31	24	SR00P	16	1020						
1A11	32	24	SR00P	16	1020						
1A11	33	24	SR00P	16	1020						
1A11	34	24	SR00P	16	1020						
1A11	35	24	SR00P	16	1020						
1A11	36	24	SR00P	16	1020						
1A11	37	24	SR00P	16	1020						
1A11	38	24	SR00P	16	1020						
1A11	39	24	SR00P	16	1020						
1A11	40	24	SR00P	16	1020						
1A11	41	24	SR00P	16	1020						
1A11	42	24	SR00P	16	1020						
1A11	43	24	SR00P	16	1020						
1A11	44	24	SR00P	16	1020						
1A11	45	24	SR00P	16	1020						
1A11	46	24	SR00P	16	1020						
1A11	47	24	SR00P	16	1020						
1A11	48	24	SR00P	16	1020						
1A11	49	24	SR00P	16	1020						
1A11	50	24	SR00P	16	1020						
1A11	51	24	SR00P	16	1020						
1A11	52	24	SR00P	16	1020						
1A11	53	24	SR00P	16	1020						
1A11	54	24	SR00P	16	1020						
1A11	55	24	SR00P	16	1020						
1A11	56	24	SR00P	16	1020						
1A11	57	24	SR00P	16	1020						
1A11	58	24	SR00P	16	1020						
1A11	59	24	SR00P	16	1020						
1A11	60	24	SR00P	16	1020						
1A11	61	24	SR00P	16	1020						
1A11	62	24	SR00P	16	1020						
1A11	63	24	SR00P	16	1020						
1A11	64	24	SR00P	16	1020						
1A11	65	24	SR00P	16	1020						
1A11	66	24	SR00P	16	1020						
1A11	67	24	SR00P	16	1020						
1A11	68	24	SR00P	16	1020						
1A11	69	24	SR00P	16	1020						
1A11	70	24	SR00P	16	1020						
1A11	71	24	SR00P	16	1020						
1A11	72	24	SR00P	16	1020						
1A11	73	24	SR00P	16	1020						
1A11	74	24	SR00P	16	1020						
1A11	75	24	SR00P	16	1020						
1A11	76	24	SR00P	16	1020						
1A11	77	24	SR00P	16	1020						
1A11	78	24	SR00P	16	1020						
1A11	79	24	SR00P	16	1020						
1A11	80	24	SR00P	16	1020						
1A11	81	24	SR00P	16	1020						
1A11	82	24	SR00P	16	1020						
1A11	83	24	SR00P	16	1020						
1A11	84	24	SR00P	16	1020						
1A11	85	24	SR00P	16	1020						
1A11	86	24	SR00P	16	1020						
1A11	87	24	SR00P	16	1020						
1A11	88	24	SR00P	16	1020						
1A11	89	24	SR00P	16	1020						
1A11	90	24	SR00P	16	1020						
1A11	91	24	SR00P	16	1020						
1A11	92	24	SR00P	16	1020						
1A11	93	24	SR00P	16	1020						
1A11	94	24	SR00P	16	1020						
1A11	95	24	SR00P	16	1020						
1A11	96	24	SR00P	16	1020						
1A11	97	24	SR00P	16	1020						
1A11	98	24	SR00P	16	1020						
1A11	99	24	SR00P	16	1020						
1A11	100	24	SR00P	16	1020						
1A11	101	24	SR00P	16	1020						
1A11	102	24	SR00P	16	1020						
1A11	103	24	SR00P	16	1020						
1A11	104	24	SR00P	16	1020						
1A11	105	24	SR00P	16	1020						
1A11	106	24	SR00P	16	1020						
1A11	107	24	SR00P	16	1020						
1A11	108	24	SR00P	16	1020						
1A11	109	24	SR00P	16	1020						
1A11	110	24	SR00P	16	1020						
1A11	111	24	SR00P	16	1020						
1A11	112	24	SR00P	16	1020						
1A11	113	24	SR00P	16	1020						
1A11	114	24	SR00P	16	1020						
1A11	115	24	SR00P	16	1020						
1A11	116	24	SR00P	16	1020						
1A11	117	24	SR00P	16	1020						
1A11	118	24	SR00P	16	1020						
1A11	119	24	SR00P	16	1020						
1A11	120	24	SR00P	16	1020						
1A11	121	24	SR00P	16	1020						
1A11	122	24	SR00P	16	1020						
1A11	123	24	SR00P	16	1020						
1A11	124	24	SR00P	16	1020						
1A11	125	24	SR00P	16	1020						
1A11	126	24	SR00P	16	1020						
1A11	127	24	SR00P	16	1020						
1A11	128	24	SR00P	16	1020						
1A11	129	24	SR00P	16	1020						
1A11	130	24	SR00P	16	1020						
1A11	131	24	SR00P	16	1020						
1A11	132	24	SR00P	16	1020						
1A11	133	24	SR00P	16	1020						
1A11	134	24	SR00P	16	1020						
1A11	135	24	SR00P	16	1020						
1A11	136	24	SR00P	16	1020						
1A11	137	24	SR00P	16	1020						
1A11	138	24	SR00P	16	1020						
1A11	139	24	SR00P	16	1020						
1A11	140	24	SR00P	16	1020						
1A11	141	24	SR00P	16	1020						
1A11	142	24	SR00P	16	1020						
1A11	143	24	SR00P	16	1020						
1A11	144	24	SR00P	16	1020						
1A11	145	24	SR00P	16	1020						
1A11	146	24	SR00P	16	1020						
1A11	147	24	SR00P	16	1020						
1A11	148	24	SR00P	16	1020						
1A11	149	24	SR00P	16	1020						
1A11	150	24	SR00P	16	1020						
1A11	151	24	SR00P	16	1020						
1A11	152	24	SR00P	16	1020						
1A11	153	24	SR00P	16	1020						