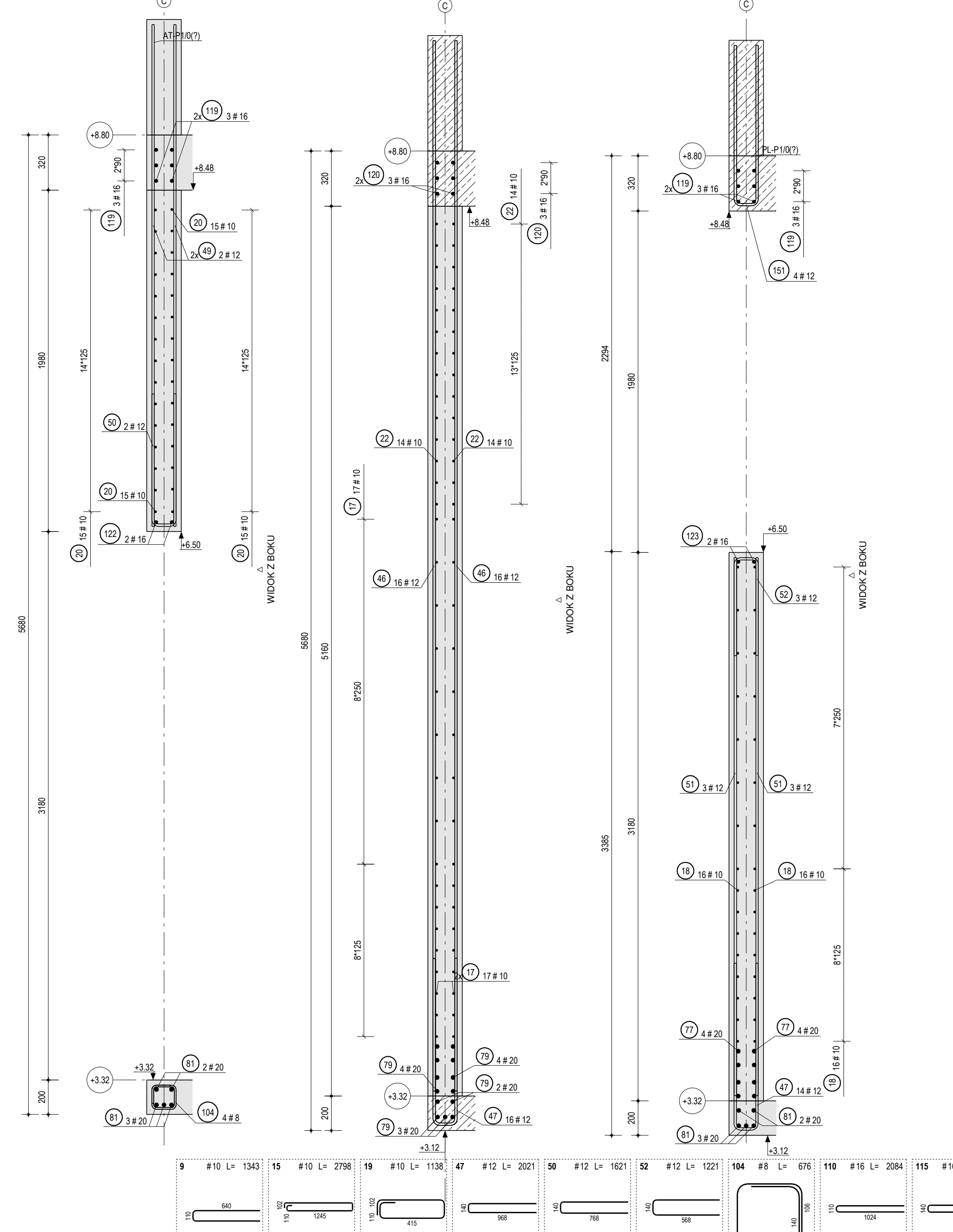
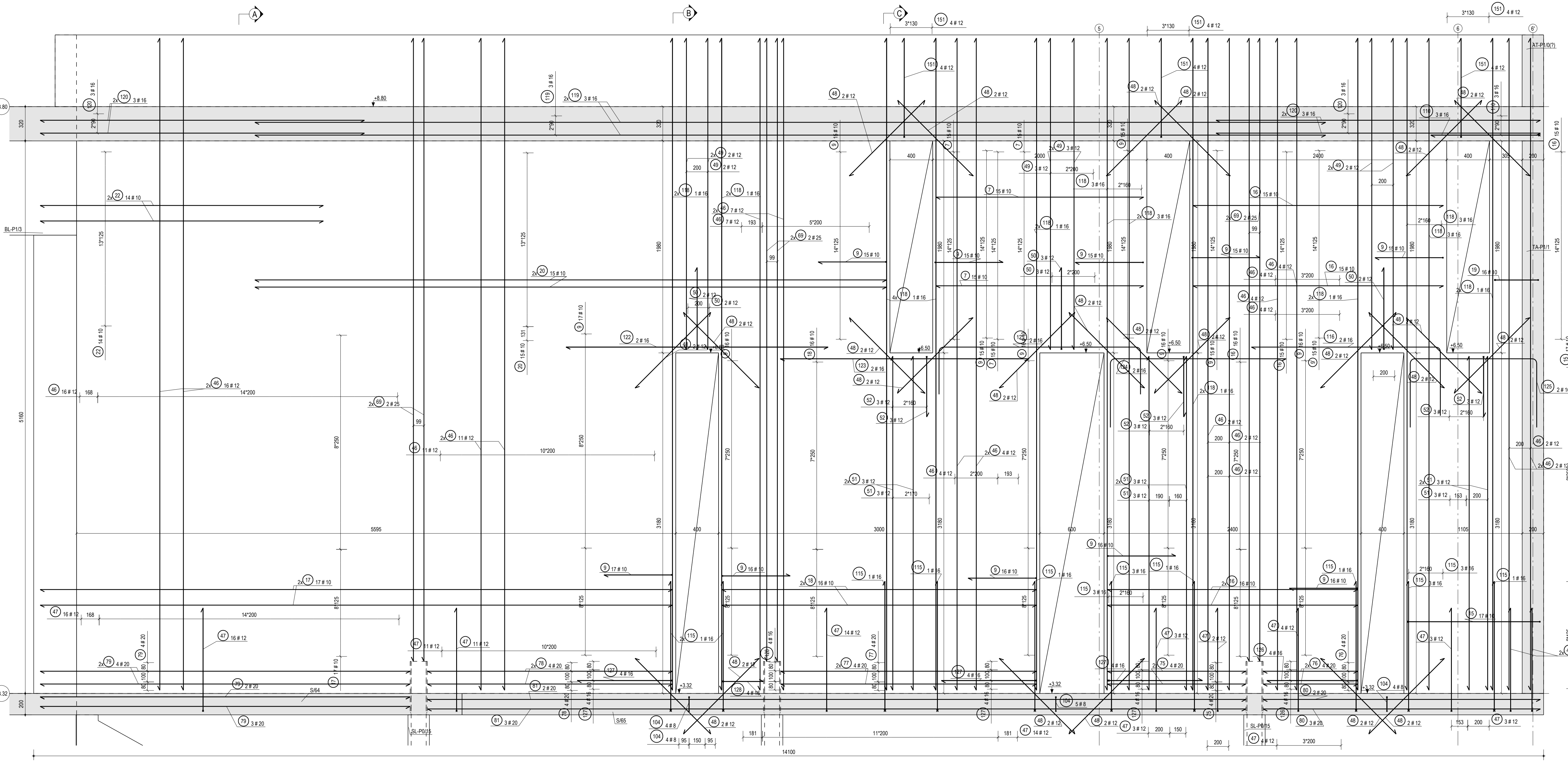


**WIDOK Z BOKU**  
1:20

**PRZEKRÓJ B - B**  
1:20

**PRZEKRÓJ A - A**  
1:20

**PRZEKRÓJ C - C**  
1:20



**ZESTAWIENIE STALI ZBROJENIOWEJ**

POZYCJA	TA-PI10	SZT.	MATERIAL	CMOP	MASA STALI [kg]	2632.1	2632.2
SERIA	NR	NAMNA	ST	KLASA	D	L	KOD
TA-PI 7	7	00000P	10	160	1	1940	
TA-PI 8	8	00000P	10	120	4	640	
TA-PI 9	9	00000P	10	270	14	102	1245
TA-PI 10	10	00000P	10	270	14	102	1245
TA-PI 11	11	00000P	10	270	14	102	1245
TA-PI 12	12	00000P	10	270	14	102	1245
TA-PI 13	13	00000P	10	270	14	102	1245
TA-PI 14	14	00000P	10	270	14	102	1245
TA-PI 15	15	00000P	10	270	14	102	1245
TA-PI 16	16	00000P	10	270	14	102	1245
TA-PI 17	17	00000P	10	270	14	102	1245
TA-PI 18	18	00000P	10	270	14	102	1245
TA-PI 19	19	00000P	10	270	14	102	1245
TA-PI 20	20	00000P	10	270	14	102	1245
TA-PI 21	21	00000P	10	270	14	102	1245
TA-PI 22	22	00000P	10	270	14	102	1245
TA-PI 23	23	00000P	10	270	14	102	1245
TA-PI 24	24	00000P	10	270	14	102	1245
TA-PI 25	25	00000P	10	270	14	102	1245
TA-PI 26	26	00000P	10	270	14	102	1245
TA-PI 27	27	00000P	10	270	14	102	1245
TA-PI 28	28	00000P	10	270	14	102	1245
TA-PI 29	29	00000P	10	270	14	102	1245
TA-PI 30	30	00000P	10	270	14	102	1245
TA-PI 31	31	00000P	10	270	14	102	1245
TA-PI 32	32	00000P	10	270	14	102	1245
TA-PI 33	33	00000P	10	270	14	102	1245
TA-PI 34	34	00000P	10	270	14	102	1245
TA-PI 35	35	00000P	10	270	14	102	1245
TA-PI 36	36	00000P	10	270	14	102	1245
TA-PI 37	37	00000P	10	270	14	102	1245
TA-PI 38	38	00000P	10	270	14	102	1245
TA-PI 39	39	00000P	10	270	14	102	1245
TA-PI 40	40	00000P	10	270	14	102	1245
TA-PI 41	41	00000P	10	270	14	102	1245
TA-PI 42	42	00000P	10	270	14	102	1245
TA-PI 43	43	00000P	10	270	14	102	1245
TA-PI 44	44	00000P	10	270	14	102	1245
TA-PI 45	45	00000P	10	270	14	102	1245
TA-PI 46	46	00000P	10	270	14	102	1245
TA-PI 47	47	00000P	10	270	14	102	1245
TA-PI 48	48	00000P	10	270	14	102	1245
TA-PI 49	49	00000P	10	270	14	102	1245
TA-PI 50	50	00000P	10	270	14	102	1245
TA-PI 51	51	00000P	10	270	14	102	1245
TA-PI 52	52	00000P	10	270	14	102	1245
TA-PI 53	53	00000P	10	270	14	102	1245
TA-PI 54	54	00000P	10	270	14	102	1245
TA-PI 55	55	00000P	10	270	14	102	1245
TA-PI 56	56	00000P	10	270	14	102	1245
TA-PI 57	57	00000P	10	270	14	102	1245
TA-PI 58	58	00000P	10	270	14	102	1245
TA-PI 59	59	00000P	10	270	14	102	1245
TA-PI 60	60	00000P	10	270	14	102	1245
TA-PI 61	61	00000P	10	270	14	102	1245
TA-PI 62	62	00000P	10	270	14	102	1245
TA-PI 63	63	00000P	10	270	14	102	1245
TA-PI 64	64	00000P	10	270	14	102	1245
TA-PI 65	65	00000P	10	270	14	102	1245
TA-PI 66	66	00000P	10	270	14	102	1245
TA-PI 67	67	00000P	10	270	14	102	1245
TA-PI 68	68	00000P	10	270	14	102	1245
TA-PI 69	69	00000P	10	270	14	102	1245
TA-PI 70	70	00000P	10	270	14	102	1245
TA-PI 71	71	00000P	10	270	14	102	1245
TA-PI 72	72	00000P	10	270	14	102	1245
TA-PI 73	73	00000P	10	270	14	102	1245
TA-PI 74	74	00000P	10	270	14	102	1245
TA-PI 75	75	00000P	10	270	14	102	1245
TA-PI 76	76	00000P	10	270	14	102	1245
TA-PI 77	77	00000P	10	270	14	102	1245
TA-PI 78	78	00000P	10	270	14	102	1245
TA-PI 79	79	00000P	10	270	14	102	1245
TA-PI 80	80	00000P	10	270	14	102	1245
TA-PI 81	81	00000P	10	270	14	102	1245
TA-PI 82	82	00000P	10	270	14	102	1245
TA-PI 83	83	00000P	10	270	14	102	1245
TA-PI 84	84	00000P	10	270	14	102	1245
TA-PI 85	85	00000P	10	270	14	102	1245
TA-PI 86	86	00000P	10	270	14	102	1245
TA-PI 87	87	00000P	10	270	14	102	1245
TA-PI 88	88	00000P	10	270	14	102	1245
TA-PI 89	89	00000P	10	270	14	102	1245
TA-PI 90	90	00000P	10	270	14	102	1245
TA-PI 91	91	00000P	10	270	14	102	1245
TA-PI 92	92	00000P	10	270	14	102	1245
TA-PI 93	93	00000P	10	270	14	102	1245
TA-PI 94	94	00000P	10	270	14	102	1245
TA-PI 95	95	00000P	10	270	14	102	1245
TA-PI 96	96	00000P	10	270	14	102	1245
TA-PI 97	97	00000P	10	270	14	102	1245
TA-PI 98	98	00000P	10	270	14	102	1245
TA-PI 99	99	00000P	10	270	14	102	1245
TA-PI 100	100	00000P	10	270	14	102	1245

**ZESTAWIENIE STALI ZBROJENIOWEJ**

POZYCJA	TA-PI10	SZT.	MATERIAL	CMOP	MASA STALI [kg]	2632.1	2632.2
SERIA	NR	NAMNA	ST	KLASA	D	L	KOD
TA-PI 101	101	00000P	10	270	14	102	1245
TA-PI 102	102	00000P	10	270	14	102	1245
TA-PI 103	103	00000P	10	270	14	102	1245
TA-PI 104	104	00000P	10	270	14	102	1245
TA-PI 105	105	00000P	10	270	14	102	1245
TA-PI 106	106	00000P	10	270	14	102	1245
TA-PI 107	107	00000P	10	270	14	102	1245
TA-PI 108	108	00000P	10	270	14	102	1245
TA-PI 109	109	00000P	10	270	14	102	1245
TA-PI 110	110	00000P	10	270	14	102	1245
TA-PI 111	111	00000P	10	270	14	102	1245
TA-PI 112	112	00000P	10	270	14	102	1245
TA-PI 113	113	00000P	10	270	14	102	1245
TA-PI 114	114	00000P	10	270	14	102	1245
TA-PI 115	115	00000P	10	270	14	102	1245
TA-PI 116	116	00000P	10	270	14	102	1245
TA-PI 117	117	00000P	10	270	14	102	1245
TA-PI 118	118	00000P	10	270	14	102	1245