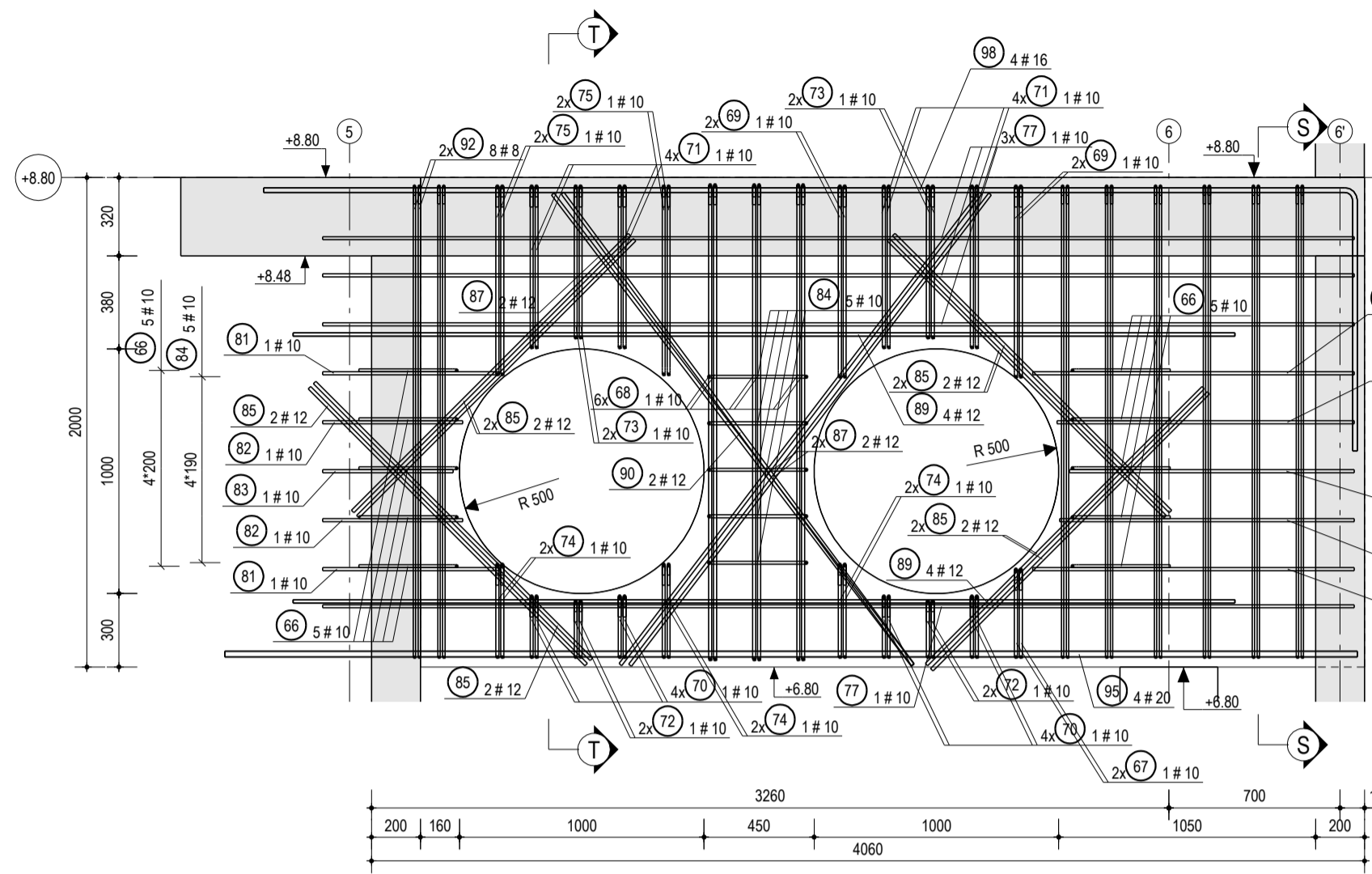
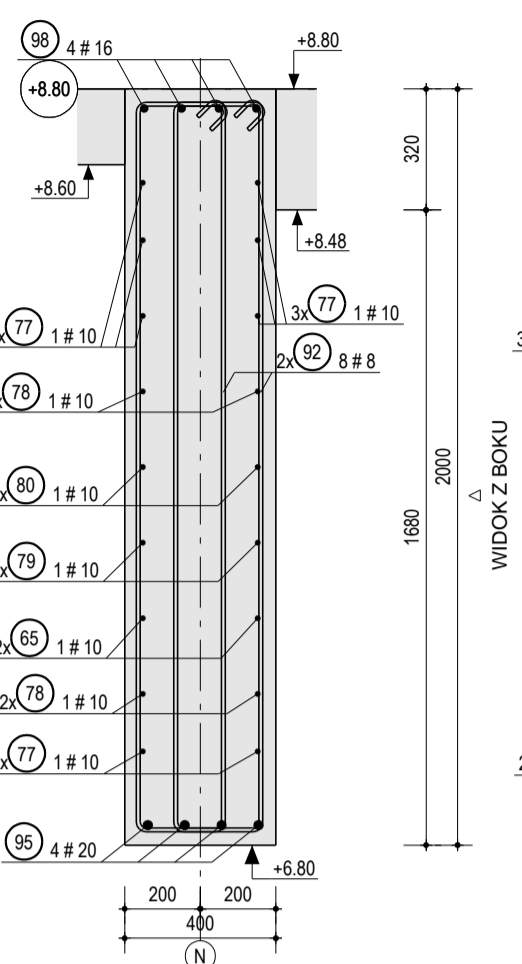


BL-P1/6, 1 szt.

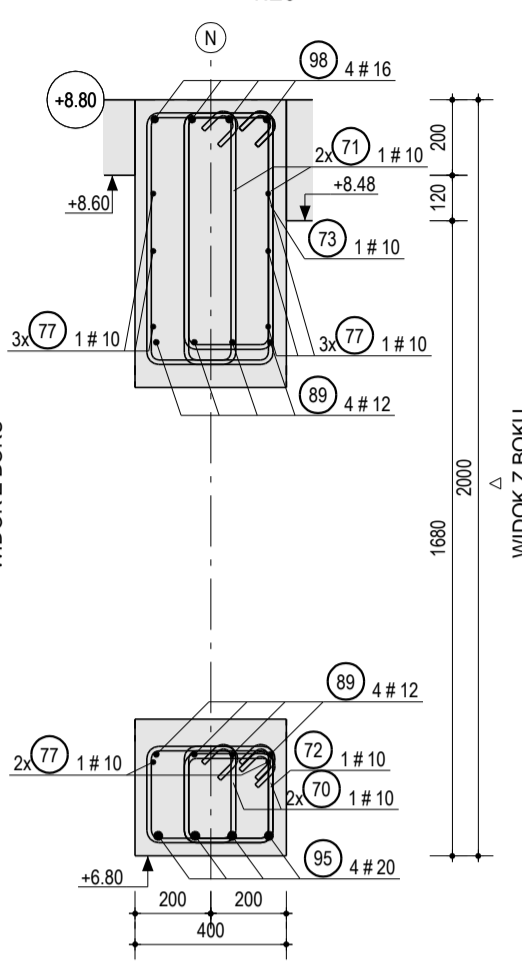
WIDOK Z BOKU 1:25



PRZEKRÓJ 1:20

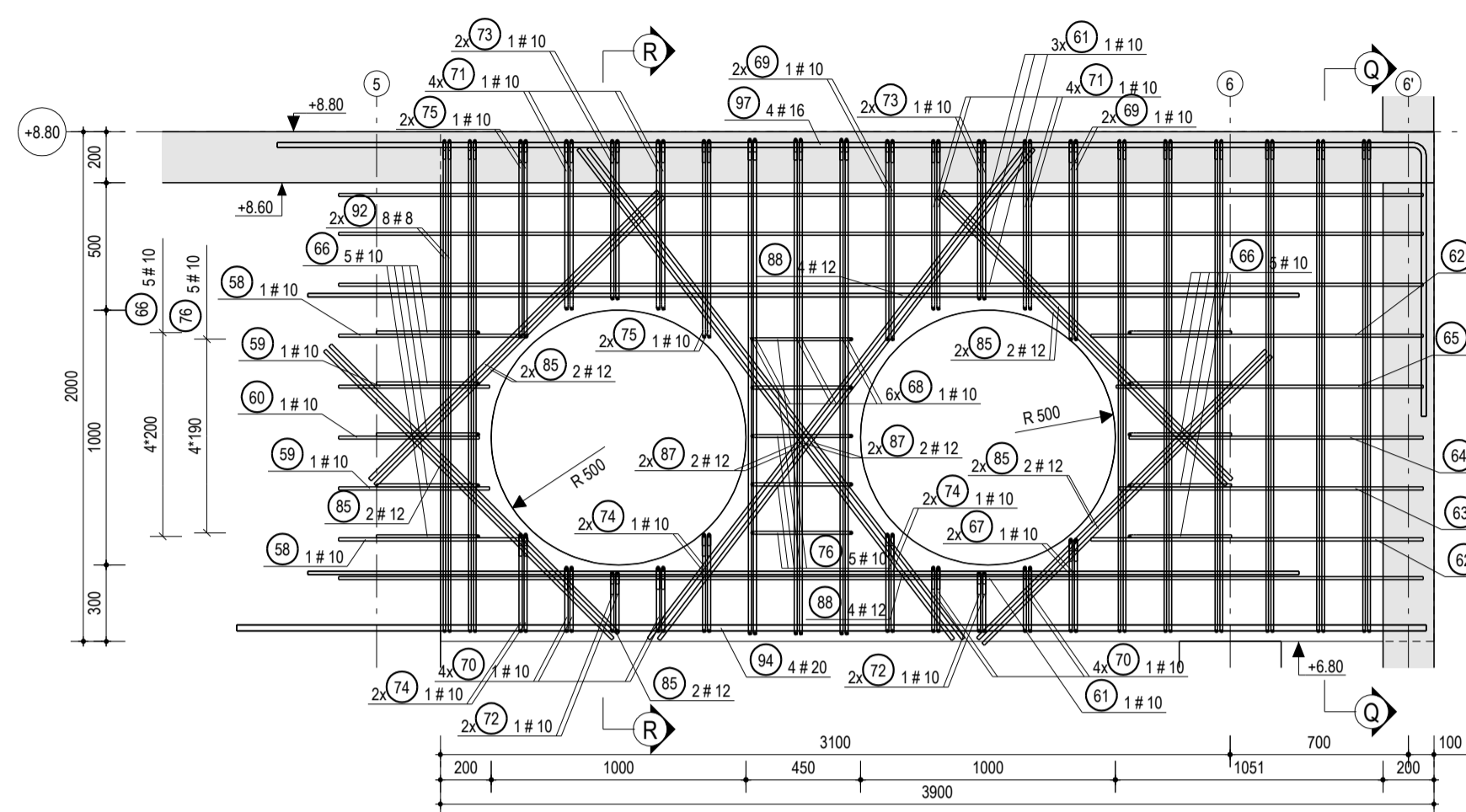


PRZEKRÓJ T - T 1:20

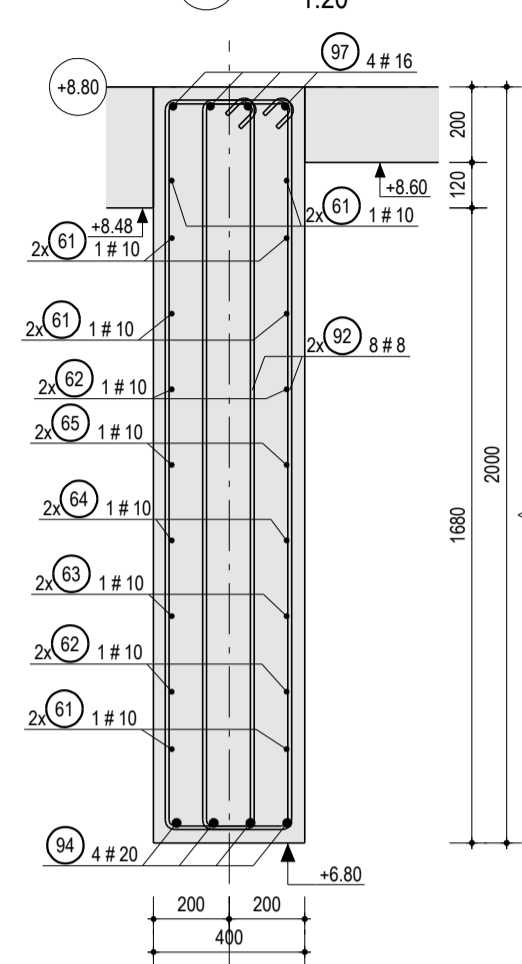


BL-P1/5, 1 szt.

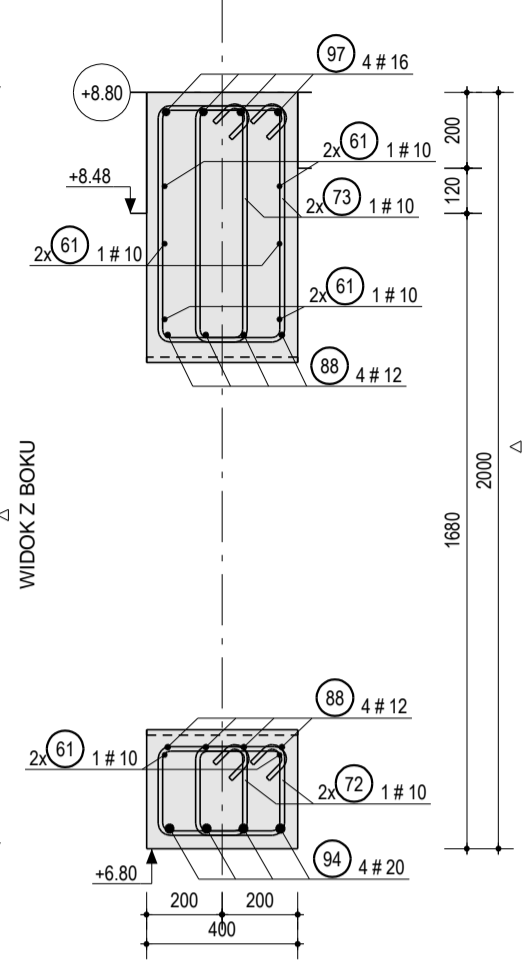
WIDOK Z BOKU 1:25



PRZEKRÓJ 1:20



PRZEKRÓJ R - R 1:20



POZYCJA		SZT.	MATERIAL	CS007	MASA STALI [kg]	ZESTAWIENIE ZBIORCZE												
						1463.1 / 1463.5												
						BL-P1												
SR	SR	SR	SR	SR	SR	SR	SR	SR	SR	SR	SR	SR	SR	SR	SR	SR	SR	SR
BL-P1	1	1	20000	12	1800	1	1800											
BL-P1	2	2	20000	12	1800	1	1800											
BL-P1	3	2	20000	12	1800	1	1800											
BL-P1	4	2	20000	12	1800	1	1800											
BL-P1	5	2	20000	12	1800	1	1800											
BL-P1	6	2	20000	12	1800	1	1800											
BL-P1	7	2	20000	12	1800	1	1800											
BL-P1	8	2	20000	12	1800	1	1800											
BL-P1	9	2	20000	12	1800	1	1800											
BL-P1	10	2	20000	12	1800	1	1800											
BL-P1	11	2	20000	12	1800	1	1800											
BL-P1	12	2	20000	12	1800	1	1800											
BL-P1	13	2	20000	12	1800	1	1800											
BL-P1	14	2	20000	12	1800	1	1800											
BL-P1	15	2	20000	12	1800	1	1800											
BL-P1	16	2	20000	12	1800	1	1800											
BL-P1	17	2	20000	12	1800	1	1800											
BL-P1	18	2	20000	12	1800	1	1800											
BL-P1	19	2	20000	12	1800	1	1800											
BL-P1	20	2	20000	12	1800	1	1800											
BL-P1	21	2	20000	12	1800	1	1800											
BL-P1	22	2	20000	12	1800	1	1800											
BL-P1	23	2	20000	12	1800	1	1800											
BL-P1	24	2	20000	12	1800	1	1800											
BL-P1	25	2	20000	12	1800	1	1800											
BL-P1	26	2	20000	12	1800	1	1800											
BL-P1	27	2	20000	12	1800	1	1800											
BL-P1	28	2	20000	12	1800	1	1800											
BL-P1	29	2	20000	12	1800	1	1800											
BL-P1	30	2	20000	12	1800	1	1800											
BL-P1	31	2	20000	12	1800	1	1800											
BL-P1	32	2	20000	12	1800	1	1800											
BL-P1	33	2	20000	12	1800	1	1800											
BL-P1	34	2	20000	12	1800	1	1800											
BL-P1	35	2	20000	12	1800	1	1800											
BL-P1	36	2	20000	12	1800	1	1800											
BL-P1	37	2	20000	12	1800	1	1800											
BL-P1	38	2	20000	12	1800	1	1800											
BL-P1	39	2	20000	12	1800	1	1800											
BL-P1	40	2	20000	12	1800	1	1800											
BL-P1	41	2	20000	12	1800	1	1800											
BL-P1	42	2	20000	12	1800	1	1800											
BL-P1	43	2	20000	12	1800	1	1800											
BL-P1	44	2	20000	12	1800	1	1800											
BL-P1	45	2	20000	12	1800	1	1800											
BL-P1	46	2	20000	12	1800	1	1800											
BL-P1	47	2	20000	12	1800	1	1800											
BL-P1	48	2	20000	12	1800	1	1800											
BL-P1	49	2	20000	12	1800	1	1800											
BL-P1	50	2	20000	12	1800	1	1800											
BL-P1	51	2	20000	12	1800	1	1800											
BL-P1	52	2	20000	12	1800	1	1800											
BL-P1	53	2	20000	12	1800	1	1800											
BL-P1	54	2	20000	12	1800	1	1800											
BL-P1	55	2	20000	12	1800	1	1800											
BL-P1	56	2	20000	12	1800	1	1800											
BL-P1	57	2	20000	12	1800	1	1800											
BL-P1	58	2	20000	12	1800	1	1800											
BL-P1	59	2	20000	12	1800	1	1800											
BL-P1	60	2	20000	12	1800	1	1800											
BL-P1	61	2	20000	12	1800	1	1800											
BL-P1	62	2	20000	12	1800	1	1800											
BL-P1	63	2	20000	12	1800	1	1800											
BL-P1	64	2	20000	12	1800	1	1800											
BL-P1	65	2	20000	12	1800	1	1800											
BL-P1	66	2	20000	12	1800	1	1800											
BL-P1	67	2	20000	12	1800	1	1800											
BL-P1	68	2	20000	12	1800	1	1800											
BL-P1	69	2	20000	12	1800	1	1800											
BL-P1	70	2	20000	12	1800	1	1800											
BL-P1	71	2	20000	12	1800	1	1800											
BL-P1	72	2	20000	12	1800	1	1800											
BL-P1	73	2	20000	12	1800	1	1800											
BL-P1	74	2	20000	12	1800	1	1800											
BL-P1	75	2	20000	12	1800	1	1800											
BL-P1	76	2	20000	12	1800	1	1800											
BL-P1	77	2	20000	12	1800	1	1800											
BL-P1	78	2	20000	12	1800	1	1800											
BL-P1	79	2	20000	12	1800	1	1800											
BL-P1	80	2	20000	12	1800	1	1800											
BL-P1	81	2	20000	12	1800	1	1800											
BL-P1	82	2	20000	12	1800	1	1800											
BL-P1	83	2	20000	12	1800	1	1800											
BL-P1	84	2	20000	12	1800	1	1800											
BL-P1	85	2	20000	12	1800	1	1800											
BL-P1	86	2	20000	12	1800	1	1800											
BL-P1	87	2	20000	12														