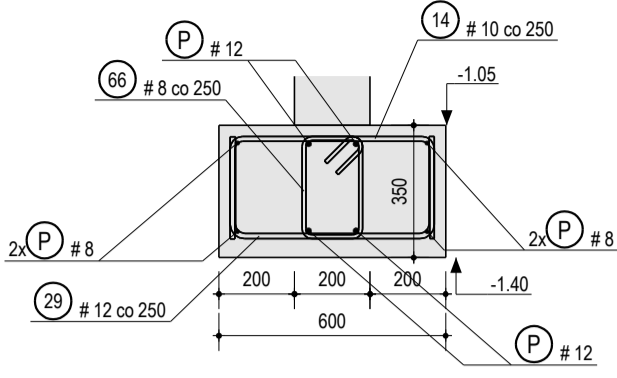


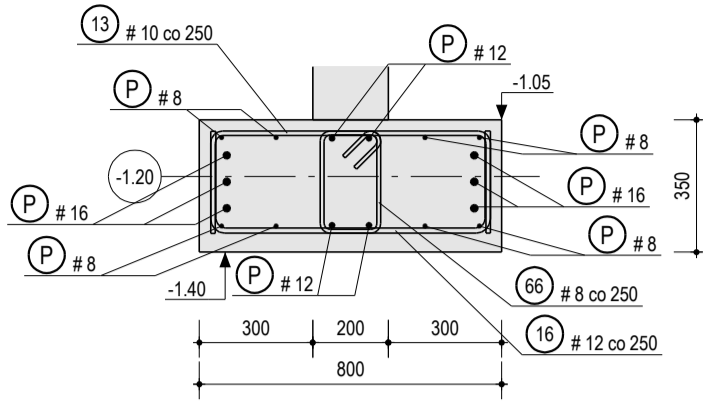
Ł/1, 1 szt.

PRZEKRÓJ 1:20



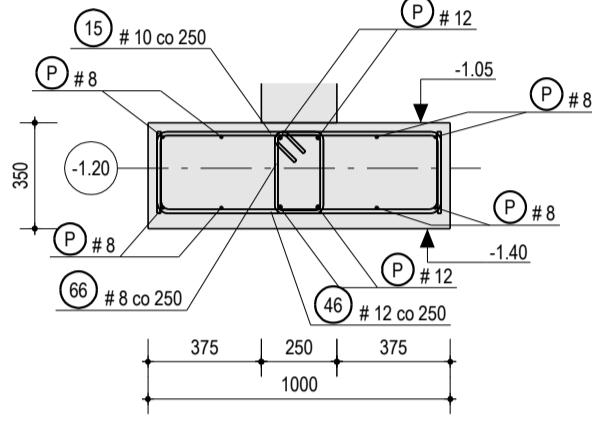
Ł/2, 1 szt.

PRZEKRÓJ 1:20



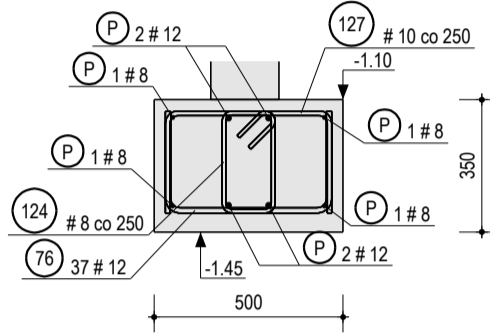
Ł/3, 1 szt.

PRZEKRÓJ F - F 1:25



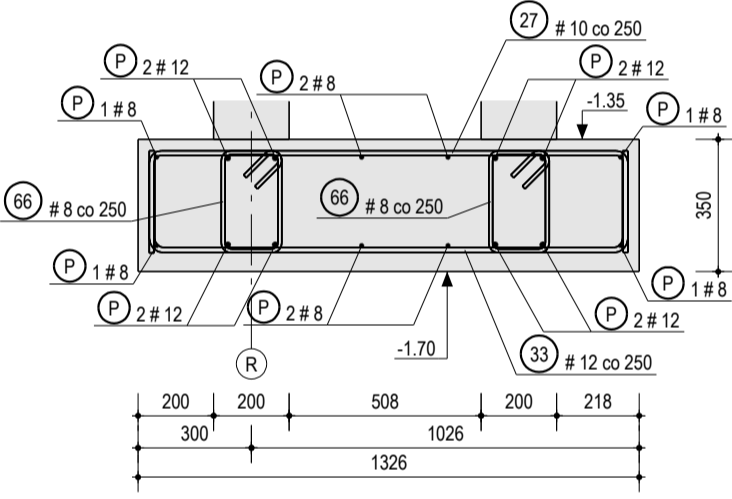
Ł/4, 1 szt.

PRZEKRÓJ A - A 1:20



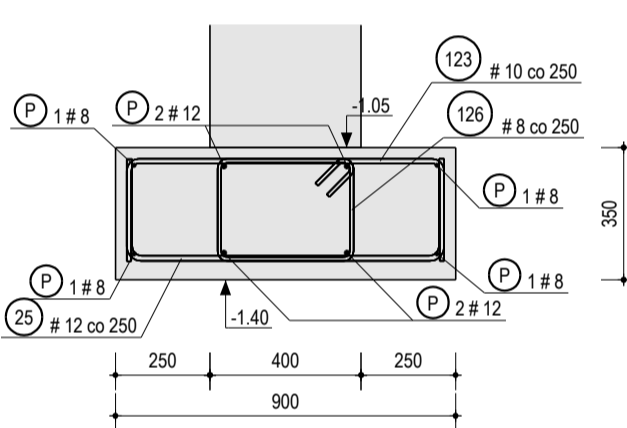
Ł/5, 1 szt.

PRZEKRÓJ B - B 1:20



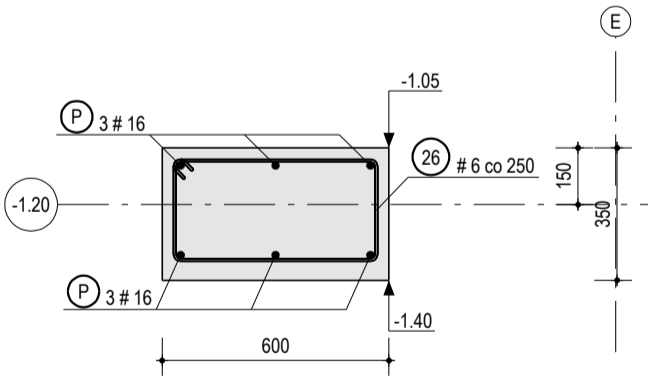
Ł/6, 1 szt.

PRZEKRÓJ C - C 1:20



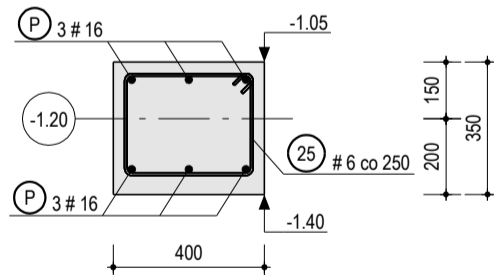
SF/1, 1 szt.

PRZEKRÓJ G - G 1:20



SF/2, 1 szt.

PRZEKRÓJ H - H 1:20



25 #6 L= 1274

26 #6 L= 1674

SF #8 L= 969

0 #10 L= 933

0 #12 L= 925

13 #10 L= 1233

14 #10 L= 1033

15 #10 L= 1433

16 #12 L= 1225

25 #12 L= 1325

27 #10 L= 1759

29 #12 L= 1025

33 #12 L= 1751

46 #12 L= 1425

66 #8 L= 1009

76 #12 L= 925

123 #10 L= 1333

124 #8 L= 969

126 #8 L= 1409

127 #10 L= 933

Summary tables for reinforcement steel (ZESTAWIENIE STALI ZBRJOJENIOWEJ) and concrete mass (KALKOWITA MASA [kg]) for various structural elements.

Project information including investor (Miasto Suwałki), project name (PROJEKT WYKONAWCZY), author (inż. Daniel Śladowski), and structural engineering firm (PRIMES structural engineering).